

CERTIFIED RECORD OF LAND CORNER MONUMENTATION

History of original corner establishment: \*

The original corner was set in 1881 by Robb and Gradon under Contract No. 383, dated March 26, 1881.

The original notes state:

N89°46'W on true line on North boundary of Sec 5

40.00 Set stone 14x10x6 for 1/4 sec cor from which

A pine 4 ins dia bears S 10° W 10 lks dist

A pine 18 ins dia bears N 70° E 34 lks dist

DIAGRAM

T9S R32E

S32

1/4---

S5

T10S

Description of corner evidence found:

Found a 12x9x5" (14x10x6") stone broken in three pieces, marked 1/4 on the north side.

An 18" P.Pine bears S 14° W, 6.8 ft (S 10° W, 10 lks), no marks visible in an opened face.

A 30" P.Pine bears N 72° E, 23.0 ft (N 70° E, 34 lks), scribing visible in a partially healed blaze.

Description of monument and accessories I establish to perpetuate the original location of this corner:

Set a 2x28" aluminum monument 22" in the ground and placed the pieces of the original stone around the monument.

I establish a new bearing tree:

A 14" Fir bears N 60° E, 20.7 ft scribed 1/4S32BT.

T9S R32E

S32

1/4---

S5

T10S

PLS1918

1988

New BTs have 3/4" brass washers marked PLS1918 attached to the BT blaze, faces and bands painted with red tree marking paint, and BT tags and Attention or Land Survey Monument signs. A steel fence post with Attention or Land Survey Monument sign is driven approximately 3-5 feet from the corner.

Sun Cadastral Survey, Cont No. 53-04H1-7-4011

Field Book: 4-40 & 6-34

Work accomplished: 9/1/88

Witnesses: Tyler Parsons, Sharon Parsons

Louise Parsons, Douglas Parsons

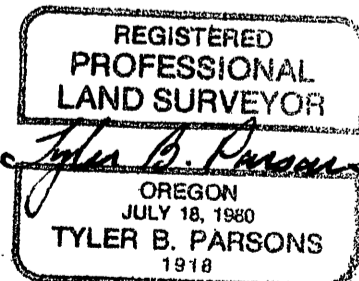
Job No.: 87221

PARSONS SURVEYING

1915 S.E. Stone Street

Corvallis, OR 97333

(503) 752-7515



Office of COUNTY SURVEYOR

County of GRANT

State of OREGON

, I hereby certify that the within instrument was filed in this office for record on the 24th day of Feb, 1989

*Robert D. Baggett* by \_\_\_\_\_

(COUNTY OFFICIAL)

(DEPUTY)